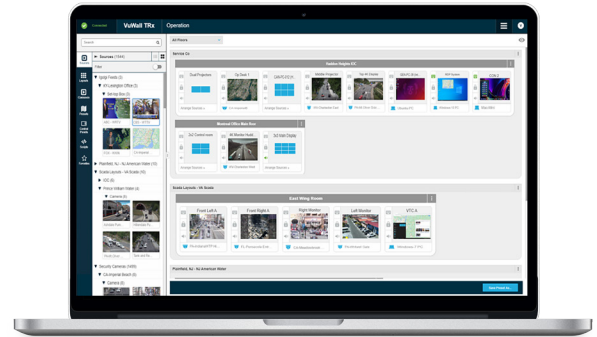


## TRx Centralized Management Software

### Powerful Centralized Multi-Video Wall Management Platform

TRx is a unique software that combines AV-over-IP distribution, advanced multi-video wall and KVM management. Designed to manage video walls in professional and mission-critical environments, TRx is deployed in control rooms, security operation centers, and corporate workspaces worldwide.

TRx is used to configure, manage, and distribute virtually any source type to any display with easy drag and drop and without any programming, simplifying the deployment of complex AV-over-IP projects and reducing risk and on-site deployment time. TRx is easy to install and makes it simple to route and service hundreds of sources and displays throughout entire facilities. Thanks to its open architecture, it is scalable, interoperable, and future-proof – by design.



#### Interoperable

Compatible with 3<sup>rd</sup> party brands. Supports H.264, H.265, SDVoE, SRT, and more.



#### Centralized Management

Configure and control all video walls and displays from a single platform.



#### Secure & Reliable

Encrypted and secure streams for 24/7 mission-critical environments.



#### Flexible & Scalable

Unlimited number of sources & destinations. Modular design that adapts to your growing needs.



#### Ease of Use

Easy drag-and-drop interface for configuration and operation.



#### Access from Anywhere

Web-based management. No software installation required.



#### Reduce Risk

Reducing configuration & deployment time in the field.

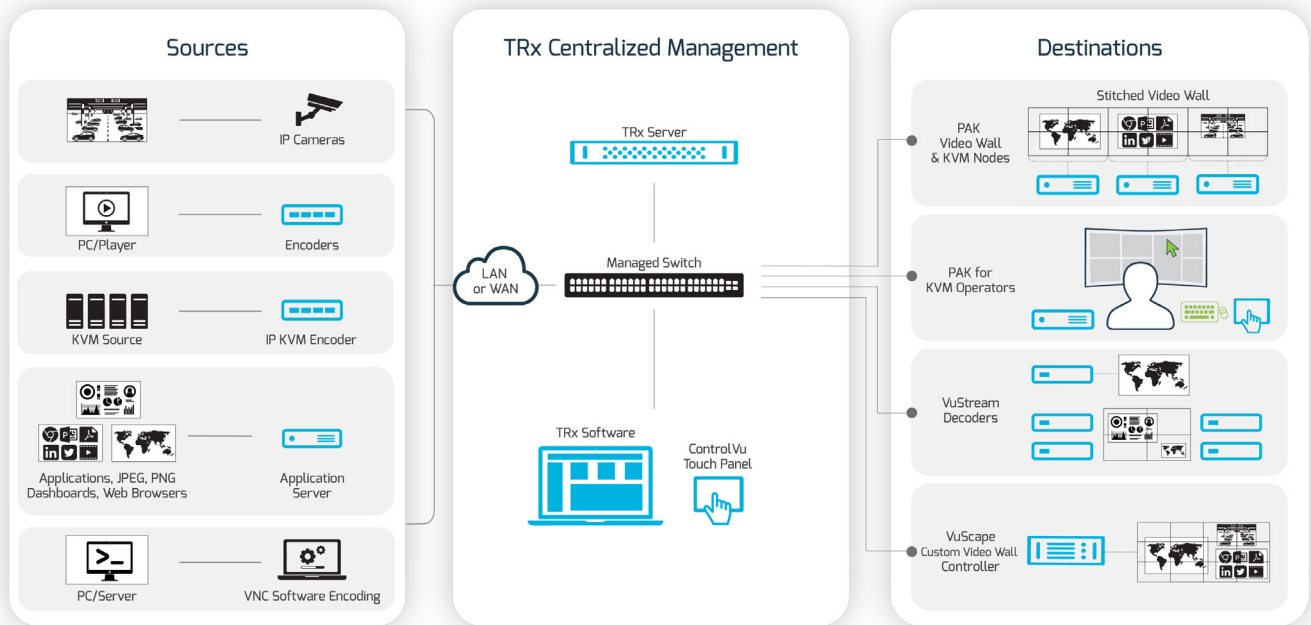


#### Redundancy & Availability

Full availability & control of your visualization infrastructure



# TRx Workflow



# TRx Applications

## Control Rooms



VIDEO WALL CONTROL & KVM

## Corporate Workspaces



MULTI-SOURCE VISUALIZATION

## Experience Centers



VERSATILE DISPLAY MANAGEMENT

## Crisis Rooms



UNIFIED VISUALIZATION

## Lobby Signage



CONTENT MANAGEMENT & DISTRIBUTION

## Classrooms & Auditoriums



PRESENTATION & COLLABORATION

# TRx Centralized Management Software Platform



## Features

### Centralized Web-Based Management

Manage and control the system with any standard browser from anywhere on the network. No software to install.

### Multi-Floor, Multi-Site Management

Define zones and floors for easy control of multiple rooms and sites. Each operator can manage local and remote content easily from a single intuitive user interface and bring any content to any destination with a single drag-and-drop operation.

### User Rights Management

Administrators can fine-tune permissions to individual users or groups with or without Active Directory. Access restrictions can be set on floors, zones, sources and displays. Permissions can be set to perform joins on video, audio, keyboard/mouse, and USB. Users can also be granted access to create/save/edit/delete presets, control panels, scripts, and more.

### Easy Drag-and-Drop Operations

Manage all AV experience through easy drag-and-drop, from source configuration and routing to advanced video wall management.

### Advanced Video Wall Management

Control and manipulate content on multiple video wall: move, resize, crop or zoom. Send layouts created on one wall to any other wall. Manage all encoders and decoders via TRx, making it a full AV over IP solution.

### Source Management

Manage all sources in the system quickly and efficiently with TRx's intuitive UI. Features include sorting and filtering, active preview mode and individual thumbnail upload. TRx supports a wide range of IP streams, HDMI, DP, and SDI sources, applications, screen captures, pictures, videos, websites, and documents.

### KVM Control

KVM devices can be fully integrated, controlled and used in TRx. Enhanced features include private mode and USB device switching. The VuStream 350 and the TRx Capture Server allows operators to convert any PC on the network into a KVM source for KVM control including audio.

### VMS Plugin for Genetec™ and Milestone

Control room operators can manage video wall controllers and other AV-over-IP devices directly from the already-familiar Genetec™ Security Center or Milestone XProtect® interfaces without switching applications.



# TRx Centralized Management Software Features

## Carousel / Source Touring

Ideal for security monitoring, the Carousel feature provides a designated window to show one source at a time for a specified amount of time before displaying the next source in the carousel list.

## Audio Management

Manage audio controls for all encoders, decoders and video wall controllers and nodes, including physical inputs and browsers.

## Powerful Scripting and Macro Tools

Built-in tool to easily create custom macro-commands and automate series of tasks in a TRx deployment. Tasks include commands such as manipulating layouts and triggers, controlling external devices such as switching displays on/off and controlling audio settings. All commands can conveniently be assigned to control buttons on the ControlVu touch panels.

## Supported Devices

TRx supports multiple platforms including:

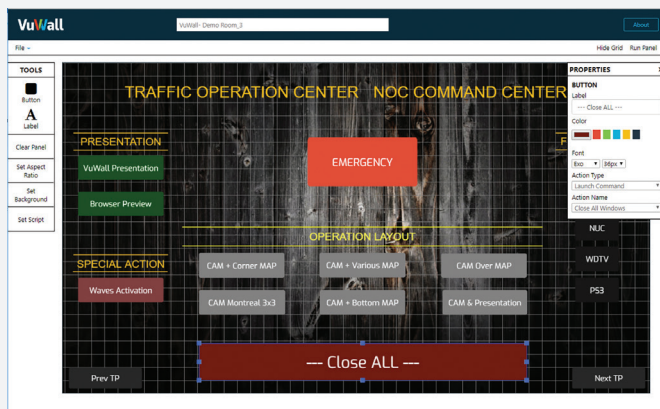
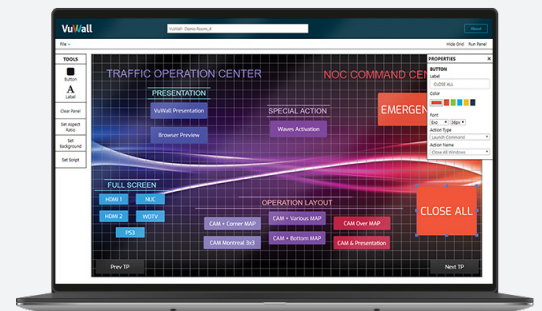
- ✓ VuWall's PAK & VuScope video wall processors
- ✓ VuWall's VuStream series of encoders/decoders
- ✓ VuWall's Application Server
- ✓ Adder ipeps+ KVM
- ✓ IHSE KVM switches
- ✓ IP sources including cameras and VNC
- ✓ Third-party encoders/decoders: H.264, SDVoE and SRT

## REST API

Extensive REST API with sample code and interactive documentation of every function for third-party integrations. Use easily with various manufacturers like AMX, Crestron, Extron, and Utology.

## Control Panel Designer

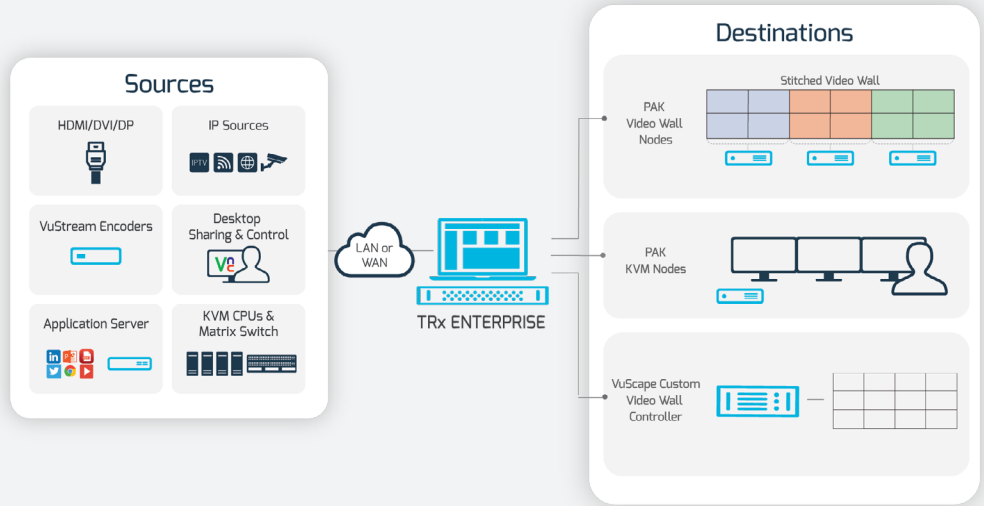
Create a fully customized touch panel with the integrated Control Panel Designer without any programming! Each button can launch layouts, scripts or even control external devices. Multiple panels can be created from the same interface, allowing a single administrator to design a custom panel for every operator station. Users can upload logos, images, backgrounds, and create custom buttons with a variety of shapes and colors. The possibilities are endless.



# Software Options

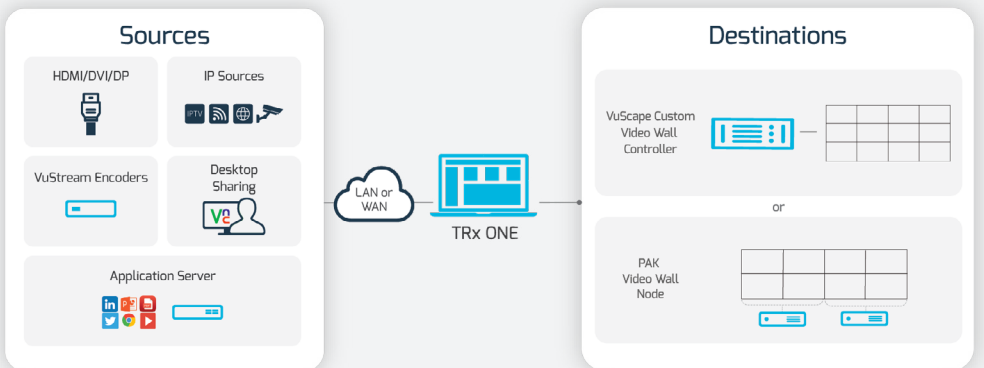
## TRx ENTERPRISE

- ✓ Projects with AV distribution and one or multiple video walls
- ✓ Supports unlimited sources and destinations
- ✓ Support for KVM operations
- ✓ Support for SDVoE Multiview Mode, Video Wall Mode & USB routing
- ✓ Supports entire VuWall ecosystem of products



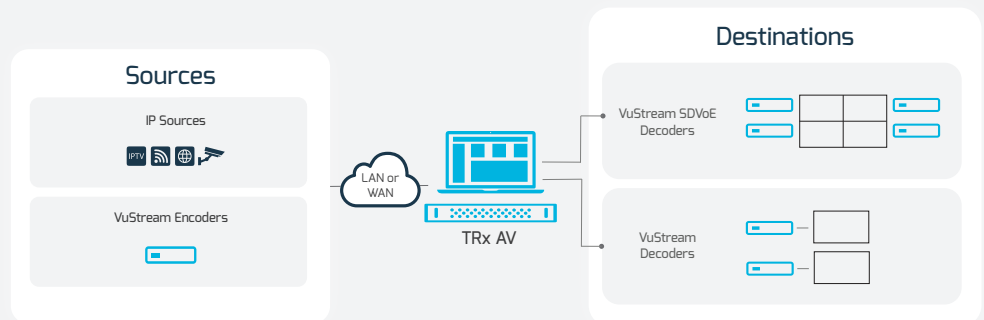
## TRx ONE

- ✓ Projects with a single video wall
- ✓ Supports single VuScope or PAK video wall composed of one or multiple PAK nodes
- ✓ Runs directly on VuScope (separate server not required) . If used with PAK, server is required
- ✓ Does not support external decoders



## TRx AV

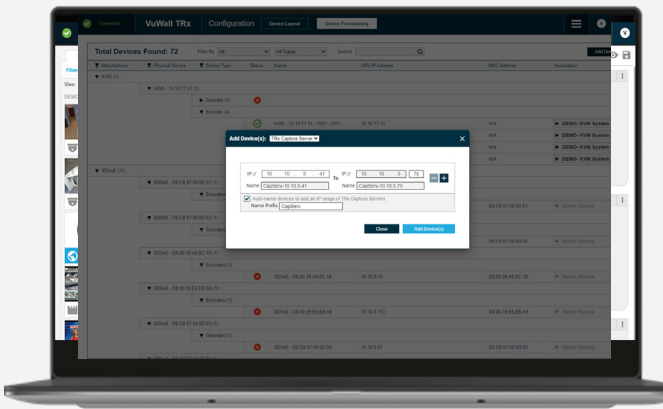
- ✓ For projects with AV distribution only
- ✓ Manage VuStream or 3<sup>rd</sup> party encoders and decoders
- ✓ Support for SDVoE Video Wall Mode and USB routing (No support for SDVoE Multiview Mode)
- ✓ Does not support PAK and VuScope video wall processors



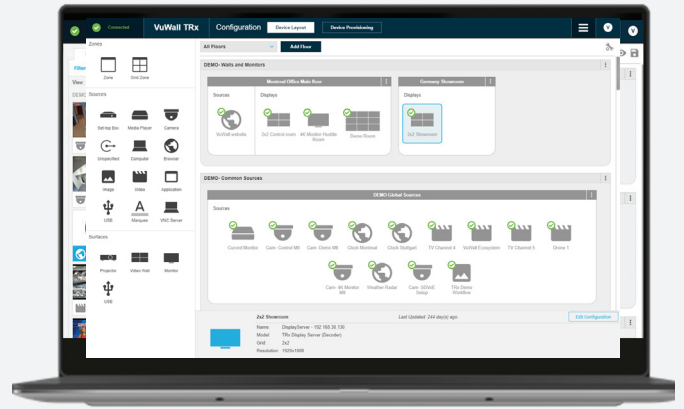
	TRx AV	TRx ONE	TRx ENT
<b>Device Support</b>			
ControlVu Touch Panels (control panel designer to create custom interfaces)	○	○	○
VuStream encoders, IP cameras and 3rd party streaming devices including SDVoE encoders	○	○	○
VuStream decoders, IHSE Matrix and SDVoE decoders	○		○
PAK Video Wall & KVM Nodes and VuScape Video Wall Controllers		○	○
<b>Control and AV Management Features</b>			
TLS 1.2 support for secured client/server communication	○	○	○
Automatic detection of encoder/decoder devices on the network	○	○	○
Arrange sources and displays across multiple zones and floors	○	○	○
Filter sources and displays based on type or location	○	○	○
Load and save presets for rooms, floors, and walls	○	○	○
Advanced User Profile Management with Active Directory		○	○
Advanced Multi-Display/Multi-Resolution Management		○	○
SDVoE Video Wall Mode & USB routing	○		○
SDVoE Multiview Mode & USB routing			○
<b>Sources Features</b>			
Audio support	○	○	○
Active preview of IP sources	○	○	○
Upload of individual thumbnails for each source	○	○	○
Colored borders and OSD		○	○
Crop IP stream and directly connected sources		○	○
Scrolling text and messages with text, files and RSS feeds		○	○
Embedded viewer to display websites including support of user credentials		○	○
Manage local applications and show pictures, documents and videos on VuScape controller		○	○
Customizable Carousel through different sources within a single window		○	○
Screen & audio capture of computers, over network with 128-bit AES encryption and VNC sources (sold separately)		○	○
Plugin to Genetec™ Security Center or Milestone XProtect® (sold separately)		○	○
<b>Scripting &amp; API Features</b>			
REST API for 3 <sup>rd</sup> party devices (Crestron, AMX, etc.)	○	○	○
Control of 3 <sup>rd</sup> party devices (displays, matrix switches, etc.) with powerful scripting languages	○	○	○
Alarm management (scripting) and support for I/O devices	○	○	○
Redundancy module for fault-tolerant systems with dual video wall controllers		○	○
<b>KVM Features</b>			
Control and manage KVM devices and use them as a source	○		○
Private Mode preventing other users to access or view specified sources			○
Support for PAK KVM feature			○

## TRx User Interface

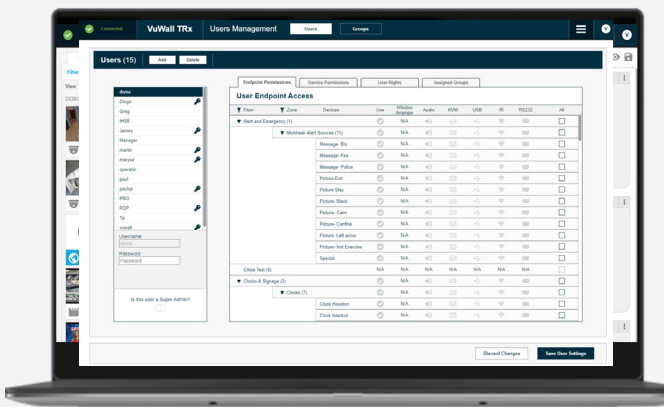
TRx features an intuitive easy-to-use drag-and-drop interface with advanced scripting tools, a control panel designer and device provisioning, all without the need for any programming.



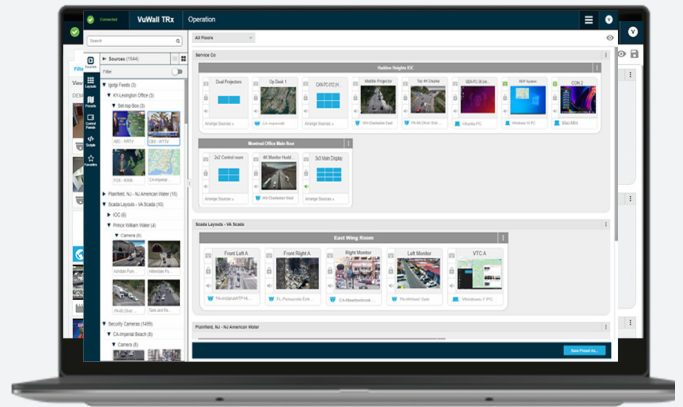
DEVICE PROVISIONING



CONFIGURATION



USER MANAGEMENT



OPERATION

## Centralized Management Server Options

VuWall servers power TRx AV and TRx ENTERPRISE software options (not required for TRx ONE) and are available in two sizes: the Mini and the 1U rack mountable servers.

### Server Mini

A compact form-factor server to easily and effectively manage small-scale projects. Ideal for areas with limited space for hardware.



### Server Mini Cluster

- ✓ High redundancy
- ✓ High availability (HA) with automatic failover
- ✓ Easy back-up and restore
- ✓ Includes two servers

Offering full redundancy of the entire AV infrastructure with two servers, delivering high availability with automatic redundancy. Servers are connected over a 1GB network, allowing them to be located across multiple sites, while the TRx software suite runs on a virtual machine on the Server Cluster.



### Server Redundant

- ✓ Redundant Power Supply
- ✓ Two SSD drives in redundant configuration
- ✓ Hot-swappable SSD drives

The 1U rack mountable server, powered by a redundant power supply and two Solid State Drives in redundant configuration ensures optimal performance. Two LAN ports allow the server to be connected to more than one corporate network enabling redundancy of the AV infrastructure and offering network flexibility and additional control.



### Server Cluster

- ✓ Fully redundant
- ✓ High Availability (HA) with automatic failover
- ✓ Easy back-up and restore
- ✓ Includes two servers

Offering full redundancy of the entire AV infrastructure with two hot-swappable servers, delivering the highest availability with automatic redundancy. Servers are connected over a network, allowing them to be located across multiple sites, while the TRx software suite runs on a virtual machine on the Server Cluster.





## Technical Specifications

Product Name	Server Mini	Server Mini Cluster*	Server Redundant	Server Cluster**
Part Number	VW-Server-MP-4	VW-Server-MP-Cluster-4	VW-Server-1U-R-4	VW-Server-2U-Cluster-4
SSD	Single SSD	Single SSD	Two Hot-Swappable SSD drives in redundant configuration	Two Hot-Swappable SSD drives in redundant configuration
Weight	1.3kg / 2.9lbs	1.3kg / 2.9lbs	14kg / 31lbs	14kg / 31lbs
Dimensions	165 x 190 x 43mm (WxDxH) 6.5 x 7.5 x 1.7" (WxDxH)	165 x 190 x 43mm (WxDxH) 6.5 x 7.5 x 1.7" (WxDxH)	437 x 503 x 43mm (WxDxH) 17.2 x 19.85 x 1.7" (WxDxH)	437 x 503 x 43mm (WxDxH) 17.2 x 19.85 x 1.7" (WxDxH)
Power	External power supply with 100-240VAC	External power supply with 100-240VAC	2x 100-240VAC	2x 100-240VAC
Power Consumption	120W	120W	400W	400W
Power Supply	Single	Single	Redundant	Redundant
Operating Conditions	0-40°C / 32-104°F Humidity 10-90%		5-35°C / 41-95°F Humidity: 10-90%	
Noise Level	Max. 36dB (depends on system config and room temperature)		Max. 61dB (depends on system config and room temperature)	
Warranty	3 years			
<b>Mounting Hardware</b>				
Rackmount	N/A	N/A	19" 1RU	19" 1RU
<b>Network Interface</b>				
Connectors & Standard***	2x RJ45, 1x at 1GbE and 1x at 2.5GbE	2x RJ45, 1x at 1GbE and 1x at 2.5GbE	2x RJ45, 10GbE (each)	3x RJ45, 2x 10GbE (each) and 1x 1GbE
IP Version	IPv4/IPv6			
IP Addressing	Static IP and DHCP			

\*The Server Mini Cluster includes 2x VW-Server-MP-4. Tech specs are specified for each of those servers.

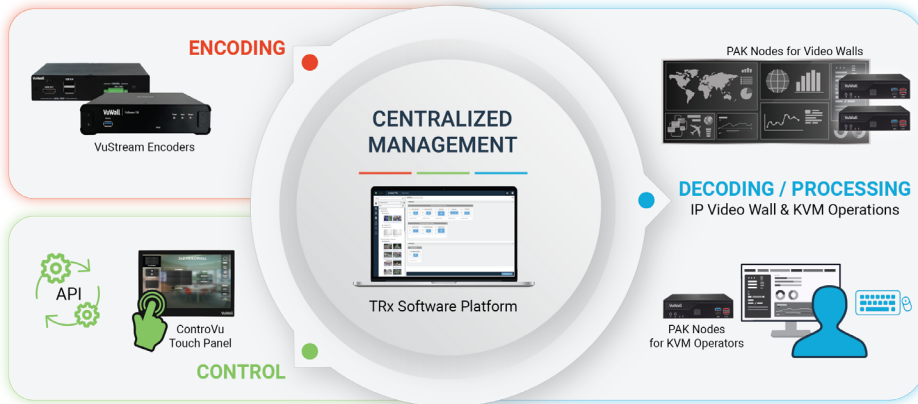
\*\*The Server Cluster includes 2x 1RU servers. Tech specs are specified for each of those servers.

\*\*\*Consult QuickStart Guides for connection details.

# The VuWall Ecosystem

## Unified Visualization & Video Wall Control

The VuWall ecosystem of interoperable products is built on a unique standards-based architecture that provides the most effective distribution of visual information, from any source to any display throughout organizations.



At the center of the ecosystem is the TRx Centralized Management Platform. TRx bridges AV, IT and IP systems ensuring interoperability and ease of use, simplifying AV-over-IP deployments, thus reducing deployment time and integration risk.

## Video Wall Management & AV Distribution Made Simple

### From Any Source to Any Display



**TRx**  
Centralized Management



**PAK**  
Video Wall & KVM Nodes



**VuStream**  
Encoders & Decoders



**ControVu**  
Touch Panels



**VuScope**  
Custom Video Wall Controllers



**Enhancements**  
More Interoperable Products

## Contact Information

**CORPORATE HQ**  
VuWall Technology Inc.  
181 Hymus Blvd., Suite 301  
Montreal, Quebec  
H9R 5P4, Canada  
+1 514 505 4436

**EUROPEAN HQ**  
VuWall Technology Europe GmbH  
Birkenweg 15  
72766 Reutlingen  
Germany  
+49 7121 766620

**US OFFICE**  
VuWall USA Inc.  
1000 Holcomb Woods Parkway  
Suite 401  
Roswell, GA, 30076 USA  
(844) 933 9255



# VuWall

Control what you see.  
[www.vuwall.com](http://www.vuwall.com)  
[sales@vuwall.com](mailto:sales@vuwall.com)